



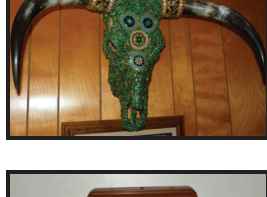
AUCTION



ANTIQUES - COLLECTIBLES - TOYS

SATURDAY - JULY 27, 2013 @ 10:00 A.M. CDT

Located at the Centennial Lodge, 14 Bel Air Ct., Champaign, IL 61821. Directions: From I-57 Take Exit #232 (Curtis Road) East 2.5 mi, then Turn left on US 45N/Dunlap St. for 1.0 mi, then Left on Windsor Ave. for .3 mi. Auction on Right Side. Watch for Signs. From I-74 & I-72, Take Interchange onto I-57 Southbound and follow directions above.



ANTIQUES & COLLECTIBLES: 5' Empire Elgin National Coffee Mill by Woodruff & Co.; 6' Cigar Store Indian; Jennings 5-Cent Indian Chief Slot Machine w/ Stand; 1955 Corbin 54-Bay US Post Office Box Cabinet w/ Combinations; John Deere Goat Cart; De Laval Junior #2 Counter Top Cream Separator; Rochlitz Automatic Water Still; 16" Bull Horn Dinner Gong; Zenith Royal D7000 Trans Oceanic Radio; GE 6" Series G Fan w/ Box; 1870's US Treasury Brass Combination Lock; Brass US Navy Lock; J.I. Case 1878 Embossed C.I. Tractor Seat; 19" Case Eagle; 7.5" Brass Case Eagle & Other Case Items; Mack Bulldog Hood Ornament; John Deere Adv. incl. Thermometer, Buckles, Signs; Ford Brass & Porcelain Emblems; Standard Oil 15" x 12" Red Crown SSP Pump Sign; (16+) Gas Pump Globes incl. Sinclair, D-X, etc.; (6) 5 gal. Fuel Transfer Cans; Red Crown Repr Pump Globe; Town Crier Hanging Radio; Majestic C.I. Stove Shelf; Early Iron Smoker Stove; 1915 Vermilion County Atlas; Singer Mini Child's Sewing Machine; Roadmaster Bicycle; Tobacco Cutters; Naughty Nellie Boot Scraper; Lg. Early Iron Padlock w/ Key; Quilts; Matty Larson Civil War Gettysburg Santa Sculpture; Civil War Books & Other Items; Victorian Curtain Tiebacks; Haviland White House China; Mustache Cups; 7 pc. Early Covered Butter Dishes incl. EAPG, Depression, Carnival.

NATIVE AMERICAN ITEMS & TURQUOISE JEWELRY: Leather Headdress w/ Feathers; 36" Skookum Doll & 6 Other Skookums; (3) 43 x 31 Framed Original Native American Artworks by M. Fischer & B. Simpson; Native American Blankets; Turquoise Mosaic 30" Steer Skull; Brass Tomahawk; T. E. Zuni Signed Turquoise Mosaic Necklace; Squash Blossom Turquoise & Coin Silver Necklace (Mercury Dimes & W. L. Halves); Opal Squash Blossom Necklace Signed M. Z.; Turquoise Watch Cuff, Watch Band & Tips; (2) Multi-Stone Rings.

LAMPS, SCULPTURES & CLOCKS: Red Embossed GWTW Parlor Lamp; Cranberry Glass Hanging Oil Lamp; 22" Budweiser Leaded Slag Glass Hanging Lamp; Hand-Painted Victorian Kerosene Hanging Parlor Lamp; 24" Handel Signed Leaded Glass Lamp Shade; Blue Geometric Pattern Hanging Lamp, Possible Railroad Item; Seth Thomas Keywind Mantle Clock; Michael Garman Jukebox Sculpture; 10" Bronze Soldier on Horse; 16" Brass Eagle.

POCKET WATCHES: (21) Pocket Watches incl. Several Early Pin & Lever Set; Tiffany & Co. Conductors Watch; Swiss Conductors Watch w/ Chime; (2) Illinois Bunn Special; (6) Elgin, (5) Waltham, Columbia, Imperial, Hampden, South Bend, Seth Thomas, etc.

RAILROAD MEMORABILIA: (12+) Railroad Lanterns incl. PC, NYCS, Wabash, Many Red Globes; Handlan ILL Power Co Brass Lantern w/ Amber Globe; (2) Dressel 4-Way Switch Lanterns; CMSTP&P Oil Can; Many Locks; Wabash RR Brass Trust Plate; A.H.Pugh Printing Co. Cincinnati Oak Traveling Desk; RR Signal Swinging Arm.

MODEL TRAINS, TOYS, & JIM BEAM: Lionel Std. 381E Engine; Lionel Std. 390E Passenger Set; Lionel Std. 1835E Pass. Set; Lionel Std. 318E Pass. Set; Lionel Std. 8E Pass. Set w/ OBs; Ives Std 3236 Orange Pass. Set; Lionel Std. 33 NYC Pass. Set; Lionel Std. 10E Freight Set; Lionel O Gauge 258 Steam Engine w/ Freight Set; 248 Pass Set; 2332 Virginian; 2339 Wabash; 2240 Wabash AB Diesel Engines; Two 726 Steam Engine Sets; Lionel Union Pacific FARR Set; Wabash Pass. Set; Mickey Mouse World Tour Train; Lionelville Circus Special Train Set; James Gang Set; Athearn 1998 John Deere HO Set; Jim Beam Train Set Boxed; (34) Jim Beam Corvettes incl. Many Rare Years & Colors; (8) Franklin Mint Corvettes; Corvette Promo Cars; (12) Hallmark Kiddie Classics NIB; NASCAR incl. Dale Earnhardt ELITE's, Wheaties, Brickyard 400; Revell HO Earnhardt Train Set; Collector Barbie's incl. 1989-1991 Holiday; Mickey Mouse Tractor; Schuco Racer; Air Hogs R/C Helicopter.

FARM TOY & PRESSED STEEL COLLECTION: Buddy L Flivver; Smith Miller Mack Army Truck; Smith Miller Bank of America Truck; Tonka #5 Fire Truck; T-Repro Buddy L International Red Baby Truck w/ Box; Doepke Caterpillar Dozer; Doepke Crane & Fire Ladder Truck; Wyandotte Tractor Trailer; Wyandotte Truck w/ Steam Shovel; Marx Pan American Airplane; ERTL Dump Truck; Druge Brothers Hyster Log Mover; John Deere Pedal Car; (200+) Vintage 1:16 Farm Toys incl. Early ERTL, Reuhl, Eska, & Customs; Highlights incl. ERTL IH 340, 460 w/ Disc, 560, 450, 400, 404, 544, 3588, 6388, Many -66 & -86 Series, 944 Combines; ERTL John Deere A's, 60 w/ Loader, 60 w/ Corn Picker, 620 w/ Loader, 730, 7520, 3020, 5020's; Reuhl Massey-Harris 44 Tractor, Disc & Combine; Reuhl Caterpillar Dozer; Precision John Deere #1 & #3; Sev. Ice Cream Box ERTLs; (10+) Toy Farmer Tractors NIB; Cockshutt Museum Collection; (15+) Custom Tractors incl. Riecke, Freiheit, Deyen, Dingman, Yoder, etc; John Deere Custom Wagon w/ Breyer Horses; Construction Toys incl. ERTL Crawlers, Conrad, Gescha, NZG; Sev. 1:32 & Smaller Scale Lots; C.I. Tractors.

KNIVES, SHEATHS & WINCHESTER ADVERTISING: (2) Custom Harvey Draper Knives; Holly Custom Bowie w/ Sheath; Case XX Rio Grande Knife; Case XX Star Spangled Banner Knife w/ Wood Case; Custom Knives w/ Nude Handles; Several Other Custom & Case XX Select Knives NIB; Randall & Other Knife Sheaths; Lawrence #50F Leather Ammo Belt; Bianchi & Bucheimer Leather Holsters; Torel Stag Motif Rifle Sling; Custom Leather Rifle Sheath; Powder Horns; Winchester 8' Table Cover; Daisy NRA Centennial BB Pistol; 6 pc. Blitz Beer Revolver Advertising Set; Franklin Mint Colt 45 Peacemaker Sign; Winchester Axe & C.I. Pans; Winchester Wall Clock; Winchester Posters & Signs; Speer Ammunition Framed Advertising; Vintage & Modern Ammo.

From the Collection of the Late Larry Smoot & Others

For Information, Call Mike 815-474-7748 or Adam 217-417-1732

AUCTION NOTE: Having Collected for forty plus years, this auction features many top quality rare and unusual items. Do not miss this great opportunity to bid on Fine Antiques and Collectibles rarely brought to market.

Lunch and Restrooms Available

TERMS: State Photo ID Required. 10% Buyers' Premium. Cash, Check & Credit Card Accepted. 3% Courtesy Fee on Credit Card Purchases. Bank Letter of Guarantee required for all Out-of-State checks or checks exceeding \$1000. Buyers are responsible for all items once sold. All Items are Sold As-Is, Where-Is. All Items must be settled before removed. Preview 4-6 pm Friday.

MIKE PETERSON AUCTIONEERS

Mike Peterson, Watseka IL #440.000917 - Adam Stam, Champaign, IL #441.001938

Auction Info: 815.474.7748 Visit our website at www.mikepetersonauctioneers.com for more pictures and upcoming auctions