



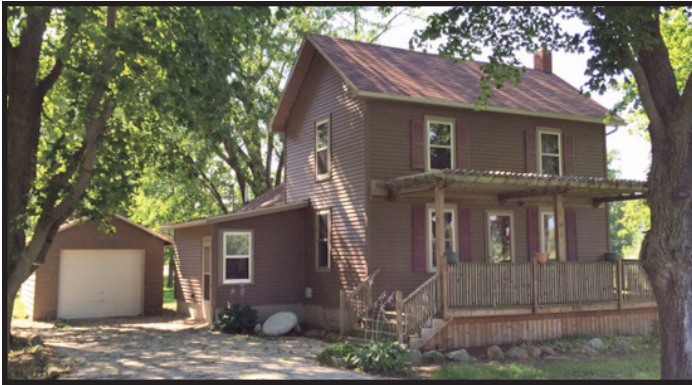
AUCTION



REAL ESTATE - NO RESERVE!!!

SUN. - SEPT. 13, 2015 @ 2:00 P.M. CDT

Located at 330 N. Maple St., Gilman, IL 60938. Directions: From the West Edge of Gilman, Take Rt. 24 East to Thomas, then North to Third St., then East 1 Block to Maple, then North to Address -OR- From East Edge of Gilman (Corner of 24/45), Go North 0.2 miles to Third Street, then West 0.5 miles to Maple, then Turn North. It is the Second House on the Left. Watch for Signs.



**OPEN HOUSE for INSPECTION on
Monday, August 31st from 5:00 - 7:00 p.m.**

Sitting on a 65' x 100' lot in a peaceful neighborhood on the edge of town, this 3 bedroom home offers several updates with hardwood floors, a full basement and a spacious new front porch. It had new vinyl siding in 2007, a new roof in 2008 and has a newer gas furnace. The property also has a detached garage w/ openers and a nice storage building for lawn and garden tools. There are plenty of shade trees and a big back yard. This house is move-in ready.

TERMS OF SALE: 10% Down Payment (non-refundable) on day of auction. Balance due at closing within 30 days. Will be sold "AS-IS" w/ no warranties or contingencies. Written purchase agreement to be entered into on day of auction. Taxes will be prorated and possession given at closing. This is an Absolute Auction. High bid will buy this property.

Diana Strasma Estate

Info. # 815-474-7748

MIKE PETERSON AUCTIONEERS

Mike Peterson, Watseka IL #440.000917

**Info: 815.474.7748 For pictures of this sale & a calendar of upcoming auctions
visit our website: www.mikepetersonauctioneers.com**