



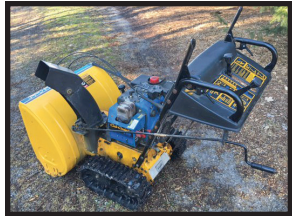
AUCTION



SHOP - BARN TOOLS - HOUSEHOLD

SATURDAY - MAY 13, 2017 @ 10:00 A.M. CST

Located at 904 W. North St., Watseka, IL 60970. Directions: From Intersection of Rts. 1 & 24 West (on the West edge of Watseka), Go 2 blocks West to Madison. Turn right and go 2 blocks North to Auction Site. Watch for signs.



LAWN & GARDEN: 2086 Cub Cadet Lawn Tractor, Kawasaki 20HP Water Cooled Twin Cylinder, Hydro., P.S., Front SCV, 54" Deck, 42" Hydraulic 2-Way Blade, Rear Wheel Weights & Chains, 4) 35 lb. Suitcase Weights & Rear Mounting Bracket, 1200 hrs; David Brown 990 Utility Tractor, Diesel w/ 300 hrs on Complete O.H. but injector pump needs rebuild, Not running at this time, 3 pt.; Case 2-btm Trip Plow; 2135 Cub Cadet Lawn Mower, Hydro; 17 cu. ft. Cub Cadet Dump Cart, John Deere 15 cu. ft. Dump Cart; Brave 20 ton, 6HP Wood Splitter, New Seals & Packings; 3 pt. Wood Splitter, 4" Ram; Troy Bilt Horse Rear Tine Tiller, 8HP Kohler w/ Potato Plow Attachment; Troy Bilt Super Tomahawk 3" Chipper/Shredder, 8HP I.C. Briggs, New Bushings & Hammers; Cub Cadet 926E Snow Blower on Tracks, 9HP Tecumseh Snow King, Electric Start w/ Reverse, Lights 26"; 3 pt. PTO Single Stage Snow Blower w/ Hyd, Swing Spout; 25 Gal. Tank Sprayer w/ 12V Pump; Troy-Bilt 4 Cycle Tiller w/ Cultivator Attachment; Stihl HS 74 G.P. Hedge Trimmer; Homelite G.P. Leaf Blower; Troy Bilt String Trimmer; Stihl 044 & 026 Chainsaws w/ 18" & 24" Bars; MTD 20" Push Mower; 42" Leaf Sweeper; Stihl G.P. Power Washer; 2) Single Axle Utility Trailers; 40' Class II Aluminum Ext. Ladder; Several other Step Ladders, H.D. Wheel Barrow; Several Garden Hand Tools.

SHOP TOOLS & EQUIPMENT: Smithy Midas 1220 LTD Combination Lathe/Mill/Drill Machine w/ 8 pc. Collet Set, Extra Chuck & Accessories, Like New!; Miller 200 Blue Star 2E 200 Amp Portable Welder w/ 16HP Tecumseh Electric Start & Cables; Miller Dial Arc 250 AC/DC Welder w/ Cables, Used Approx. 10 Hrs; Magna Force 5HP Two Stage 60 Gal. Air Compressor, Low Hours; Craftsman 33 Gal., 6HP, 220V Portable Air Compressor; Ridgid Twin Tank 9 gal. Portable Air Compressor w/ Honda 5.5HP motor; Craftsman Toolboxes including Triple Stack 21 Drawer, Double Stack 23 Drawer, & 12 Drawer Single Tool Box; Assorted S.A.E. & Metric Open End Wrenches & Sockets; Several Mechanics Tools; 3/4" Drive Socket Set; Snap-On TD-2425 Tap & Die Set; Battery Chargers; Ext. Cords; Blue-Point Rex 25 Extractor Set, 1/8"-7/8"; Craftsman Torch Set w/ Extra Hose & Gauges, Metal Case; Milwaukee Portable Bandsaw & Sawzall; Makita Portable Bandsaw; Galaxy 12 Spd. Floor Model Drill Press; Craftsman 12" Bandsaw; 6" Bench Grinder w/ 1/2HP; Makita 12" Chop Saw; 4", 7" & 9" Milwaukee & Makita Angle Grinders; Assorted C-Clamps; Air Tools; LP8500 Super Winch, 12V; Milwaukee Floor Model Hack/Bandsaw; Floor Jacks; Jack Stands; Bolt Bin; Chains, Binders, Ratchet Straps.



WOODWORKING TOOLS & EQUIPMENT: Rockwell/Beaver 10" Table Saw w/ Cast Iron Tabletop; Craftsman Router Table w/ 1/2" Router; Rockwell/Beaver 36" Wood Lathe; Craftsman 6" x 12" Surface Planer, 2HP; Craftsman 10" Contractor Series Radial Arm Saw; Rockwell/Beaver 6", 1/2HP Joiner/Planer; Craftsman 18" Scroll Saw; Grizzly 4" x 36" Belt - 6" Disc Sander; Several Irwin Quick-Grip Clamps & Pipe Wood Clamps; Marples Wood Lathe Tools w/ Case; Craftsman Jigsaw; Makita 10" Miter Saw; Shop Vacs.

HOUSEHOLD & COLLECTIBLES: Knechtal Saw Buck Dining Rm., Table Solid Hard Maple 65" x 42" w/ Leaves, Top is Solid 1" w/ 2" Thick Frame & 6 Chairs; Lane Lg. Gray Rocker Recliner; Sm. Rocker Made in Canada by the Mennonites; Chesterfield Sofa; Wicker Rocker; Rose Colored Rocker Recliner; Computer Station; Multiple Pieces of Bedroom Furniture; Office Desk; RCA Console Record Player; Maytag Stainless Steel Gas Stove w/ S.S. Hood; Maytag Stainless Steel Side by Side Fridge; Maytag Washer & Dryer; Shop Fridge w/ Ice Maker; Huntsman Canadian Made Wood Burning Stove, 1/4" Plate Steel Body, Brick Lined, Double D.R. Air Tight w/ 8" Stove Pipe, UL Listed; Motorized Adjustable Twin Hospital Bed; 2) Energy Star AC Window Units, 18,000 & 10,000 BTU, Sm. Unit Used 2 Seasons; Singer Quilt Making Sewing Machine & Also Singer H.D. Machine; Kenmore Portable Sewing Machine, Refurbished; Several Pressure Cookers, 12 Quart Canning Cooker; Hamilton Turkey Over; Hoover Steam Vac; 6' Treated 2 x 6 Picnic Table; 60's John Deere 20 Pedal Tractor; 60's Lionel Train Set; Assorted Antique Tools; 300+ C.D.'s, Several New; Dog Pen 12' x 8' w/ Door, 6' High Fence; Cut & Split Firewood; Tarps; Johnson Outboard Boat Motor, & much more.

PORTABLE BUILDING: 10' x 14' (Treated Material) Wired & Insulated w/ 3/4" Floor. Building is on the owner's property and will need to be moved within two weeks of the auction (buyer's responsibility). *To inspect building before the auction contact Mike at 815-474-7748.*

Charles Block, Owner
Info. # 815-474-7748

Lunch and Restrooms Available

TERMS: Cash or check with photo ID. Visa, Mastercard & Discover accepted with a 3% courtesy fee. Announcements day of sale take precedence over written material. Not responsible for accidents, theft or misrepresentation.

MIKE PETERSON AUCTIONEERS

Mike Peterson, Watseka IL #440.000917 - Adam Stam, Champaign, IL #441.001938

Auction Info: 815.474.7748 Visit our website at www.mikepetersonauctioneers.com for more pictures and upcoming auctions