



# AUCTION



## TRACTORS - PRIMITIVES - COLLECTIBLES

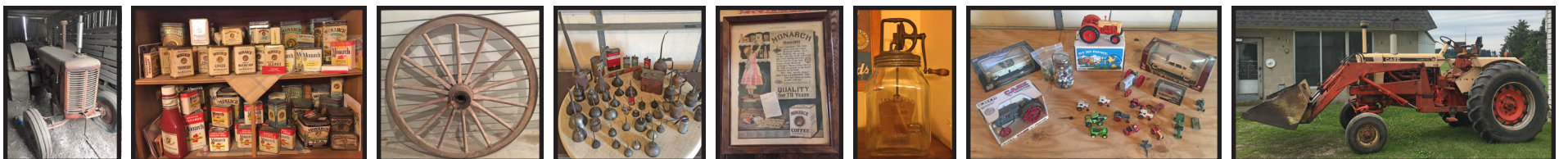
### SATURDAY - AUG. 3, 2019 @ 10:00 A.M. CST

Located at 2576 E 2800 N Rd., Donovan, IL. Directions: From Rt. 52 (2600 N 2500 E), Go 2 miles North to 2800 N 2500 E, Then East 1/2+ mile. Watch for signs. Selling from the Onnie Hilgendorf Estate.



**TRACTORS & EQUIPMENT:** Case 1170 AgriKing 451 Turbo Diesel, Black Night Special Edition, Cab, Front Weights, Original S.S. Muffler, 18.4-38's - 90%, New batteries, Dual Hydraulics, 6700 hrs., Serial No. 867851, Used on planter & hay equipment; Case Comfort King Diesel w/ Case Loader, Sells Separate, Serial No. 8295138; Case D.C. Tractors including 1952, Live PTO & Hydr., Fenders, Mag., Eagle Hitch, 12-38's, Crank, Runs, Ser. No. 5610943; "53" - Ser. No. 8027684, Foot Clutch, Live PTO & Hydr., Runs, Eagle Hitch, Fenders, 13.6-38's; "52" - Ser. No. 5611027, Live PTO & Hydr., 13.6-38's, Good, Runs; "52" - Ser. No. 5618960, Fenders, Belt Pulley, Lights, Live PTO & Hydr., 13.6-38's, Good, Runs; "51" - Ser. No. 5526358, Fenders, Mag., Wheel Weights, 13.6-38's, Good, Runs; "50" - Ser. No. 5414517, Fenders, Lights; "51" - Ser. No. 5518357, Loader; "51" - Ser. No. 5505430, No Mag., Poor Fenders; "52" - Ser. No. 5608779 (CC Motor); "48" - Ser. No. 5247117, Fenders, No Hood; SC - Ser. No. 8027522, Foot Clutch, Live PTO & Hydr., Fenders, Mag., Eagle Hitch, New Tires, Runs; "49" SC - Ser. No. 5331109, Loader, Belt Pulley, Lights, 12.4-38's; "50" VAC - Ser. No. 5452557, Foot Clutch, Belt Pulley, Eagle Hitch, Crank, Good Tires w/ Finishing Mower, Runs; 1948? LA - Ser. No. 5222036, Wide Front, Mag., 18.4-30's, Water pump leaks, Runs; Case 5-14 Trip Plow; Case 3 Btm. Plow, Eagle Hitch; 2) Case 2 Btm. Plows; Case #10 Pull Sickle Mower; Case Powr Test HI-EFF Dynamometer; Several Pallets of DC & SC, VAC Tractor Parts including fenders, grills, manifolds, battery boxes, lights & brackets, belt pulleys, gas tanks, magnetos, seats, 10-28 bar tires and more; Case & Other Tractor & Equipment Manuals; Front Weights & Weight Brackets, Off 70 & 30 Series Tractors; David Bradley 12KW PTO Generator; Generac 20KW PTO Generator.

**WOODWORKING & SHOP TOOLS & EQUIPMENT:** Jet Model DC-650 Vacuum System, Complete; Craftsman 10" Bandsaw; Delta 1" Belt Sander; Wilton Belt/Disk Sander; Ryobi 10" Surface Planer; Delta 10" Table Saw; Bench Top H.D. Drill Press; Delta 28" Band Saw; Frejoth Sm. Wood Lathe, Belsaw Grinder; Craftsman 10-drawer Tool Cabinet; Wood Clamps; Skillsaws & Other Power Tools; Several Board Ft. of White Oak; 1983 Honda ATC 200E 3-Wheeler, Motor is free; Another Honda 3-Wheeler for parts; Fimco 12V 15 Gal. Pull Sprayer; M&W Front Deck 48" Mower, Needs Motor; Yazoo Mower; Mr. Heater Floor Model Propane Heater; Rheem Central Air Conditioning Unit, Model No. RGDG-10EAUER-XR12, MFR. Date 5/2004.



**BARN PRIMITIVES:** Oliver Star 4 Left Hand Walking Plow, Good condition; Montgomery Wards Zephyrator Cream Separator (Electric or Crank w/ wrenches); Corn Dryers; General Quick Copper Fire Extinguisher; Coal Buckets; Feed Baskets; Fuel Cans; Grinding Wheels; Chicken & Egg Crates; Cow Bells; Advertising Tins; Lanterns; Egg Scale; Egg Washer & Water Cans; CI Match Dispenser; Wayne Station Pump; Globe Fuel Pump Gauges; Toledo Platform Scale; Oil Can Collection; Pop Bottles including Sweet Tooth Crate & Others; Pulleys; Hand Held Corn Planters; Meat Grinders; Wood Spoke Wagon Wheel; Dairy including Pasteurizers, Stainless Steel Milking Containers, Cream Cans, Foggers, Calf Weeners, ID No. Chains, Cow Kickers & Tank Heaters, Small Cream Separator; Milk Bottles, Crock Jugs; Lg. Wooden Barrel; Wrenches & Other Primitive Hand Tools; Walking Plow; Hit-and-Miss Engine (Is free. Couldn't find any names or numbers. See Pictures.); Valvoline Oil Tin Sign.

**COLLECTIBLES & HOUSEHOLD:** Monarch Finer Foods & Coffee Advertising Memorabilia including Coffee Thermos, Wall Clock, Several Prints, Spice & Other Tins and Wash Tub on Wheels; Daisy Butter Churn; Ray Boy CI Coal Stove; Marbles; Wicker Bird Cages; Ammo Boxes; Oak Antique Writing Desk; Vintage O Gauge Lionel Train Set; Board Games; Puzzles; Barbie Cut-out Paper Dolls; Tonka Toys; Tootsie Toy Die Cast Cars; Farm Toys; Baby Crib & High Chair; 5¢ Mix Nut Vending Dispenser; Sears 22 cu. ft. Chest Freezer; Wood Crafts including Bird House, Church, Airplane, Race Car & Other Toys; Sm. Lady's Rocker; Ice Cream Churns; Hall Trees; Pump Organ.

**SELLING FOR CAROLYN BOSSONG:** Dining Room Table & 6 Padded Chairs w/ 2 Leafs; Round Kitchen Table w/ 4 Chairs & 2 Leafs; 2) Recliners; Glass Top End Table; Conn Electric Organ w/ Bench; C.I. Cookware; Clocks; Silverware, Dishes, China Set, Clocks; Tools including Snap-On Tools - 5 pc. Pick Set, Screwdrivers & Drill Bits; Mac & Matco Screwdrivers; Sockets including S&K and Craftsman, 3/8" Standard Impact & U-Joints; S&K 1/2" & Craftsman 3/8" Metric Deep Wells; Craftsman 1/4" Standard Deep Wells Plus Extensions & Adapters.

## Nancy Hilgendorf, Owner

Info. # 815-474-7748

Lunch and Restrooms Available

**TERMS:** Cash or check with photo ID. Visa, Mastercard & Discover accepted with a 3% courtesy fee. Announcements day of sale take precedence over written material. Not responsible for accidents, theft or misrepresentation.

## MIKE PETERSON AUCTIONEERS

Mike Peterson, Watseka IL #440.000917

Auction Info: 815.474.7748 Visit our website at [www.mikepetersonauctioneers.com](http://www.mikepetersonauctioneers.com) for more pictures and upcoming auctions